

MARVEL
© 1984 MARVEL
COMICS GROUP



75¢
3
JAN
© 02629

APPROVED
BY THE
COMICS
CODE
AUTHORITY

#3 IN A SIX-ISSUE LIMITED SERIES

Kitty Pryde AND WOLVERINE



MILGROM



DEATH

I'M A
CREATURE OF
THE WILD.

I HATE CITIES...

...HATE
CIVILIZATION,
WITH ALL ITS
IDIOT RULES.

GIMME THE
FREE, OPEN,
ELEMENTAL
SPACES OF MY
MOUNTAINS...

...WHERE A MAN
HOLDS HIS FATE
IN HIS OWN
HANDS. NO LIES
THERE, NO
DECEPTION, NO
COMPROMISE.

SO WHY, I
WONDER, DO
I LOVE THIS
LAND, THIS CITY?

IT'S PROBABLY THE
MOST STRUCTURED
SOCIETY ON EARTH,
LACED TIGHT WITH
CENTURIES OF
TRADITION AND
RITUAL, COVERING
EVERY CONCEIVABLE
ASPECT OF PUBLIC
AND PRIVATE LIFE.

I WAS BORN TO
ONE WORLD.
BUT I CHOOSE
TO BE PART OF
THIS OTHER.

I'M **WOLVERINE**.

A STAN LEE PRESENTATION by

CHRIS CLAREMONT, writer & **ALLEN MILGROM**, artist

TOM ORZECOWSKI
letterer

GLYNIS WEIN
colorist

ANN NOCENTI
editor

JIM SHOOTER
editor-in-chief

KITTY PRYDE AND WOLVERINE™ Vol. 1, No. 3, January, 1985. Published by MARVEL COMICS GROUP, James E. Galton, President. Stan Lee, Publisher. Michael Hobson, Vice-President, Publishing. Milton Schiffman, Vice-President, Production. OFFICE OF PUBLICATION: 387 PARK AVENUE SOUTH, NEW YORK, N.Y. 10016. Published monthly. Copyright © 1984 by Marvel Comics Group, a division of Cadence Industries Corporation. All rights reserved. Price 75¢ per copy in the U.S. and \$1.00 in Canada. Printed in the U.S.A. No similarity between any of the names, characters, persons, and/or institutions in this magazine with those of any living or dead person or institution is intended, and any such similarity which may exist is purely coincidental. This periodical may not be sold except by authorized dealers and is sold subject to the conditions that it shall not be sold or distributed with any of its cover or markings removed, nor in a mutilated condition. **KITTY PRYDE AND WOLVERINE** (including all prominent characters featured in this issue), and the distinctive likenesses thereof, are trademarks of the MARVEL COMICS GROUP. POSTMASTER: SEND ALL ADDRESS CHANGES TO KITTY AND WOLVERINE, 387 PARK AVENUE SOUTH, 10TH FLOOR, NEW YORK, N.Y. 10016

I'M THE BEST THERE IS AT WHAT I DO.

KIAII!

BUT WHAT I
DO BEST ISN'T
VERY NICE.

SOME PEOPLE, THOUGH,
HAVE TO LEARN THAT
THE HARD WAY.

TO BLOCK THE SPIKES, I POP MY CLAWS--

--FORGED ADAMANTIUM
AN' RAZOR-KEEN, ABLE
TO CUT THROUGH ANY-
THING-- FROM THEIR
HOUSINGS BUILT INTO
MY FOREARMS.

MY BONES ARE LACED
WITH THE SAME STUFF.
THEY CAN'T BE BROKEN.

USEFUL ASSETS IN A FIGHT.



MOREOVER, I'M A MUTANT, WITH A FAST-HEALING TALENT THAT CAN HANDLE ALMOST ANY WOUND, POISON OR DISEASE.

MAKES ME PRETTY HARD TO KILL.

BUT THERE ARE WAYS.



LADY TRIES REAL HARD TO FIND 'EM.

SHE ISN'T FOOLIN' AROUND, EITHER.

ONE SCREW-UP ON MY PART, AN' I'M HISTORY.



I. RETURN THE COMPLIMENT.

GOTCHA!



THAT, LOVER, DEPENDS ON YOUR POINT OF VIEW.



LATER...

COMIN' UP FROM DOWNWIND LIKE YOU DID, I COULDN'T SPOT YOUR SCENT.

THAT WAS MY INTENT, LOGAN, I WANTED TO SURPRISE YOU.

CRAZY STUNT COULDA GOTTEN YOU KILLED, YUKIO.

THE RISK, DEAR HEART...

...IS WHAT MAKES THE GAME...

...EXCITING.



HOW'D YOU KNOW I WAS EVEN IN JAPAN, MUCH LESS WHERE TO FIND ME?

I HAVE SOURCES.

I, TOO, AM VERY GOOD AT WHAT I DO.

I MISSED YOU, LOGAN--SAN.

WHY, WHEN YOU KNOW NOTHIN' CAN COME OF IT?

CONSIDER ME A COCK-EYED OPTIMIST.

<BY THE ETERNAL GODS --I WILL NEVER UNDERSTAND WHAT YOU SEE IN MARIKO YASHIDA!*>

*TRANSLATED FROM THE JAPANESE--AmnN.



< YOU THINK I DO?? >

< OF ALL THE WOMEN IN CREATION, SHE'S THE LAST I WOULD HAVE EXPECTED TO LOVE, MUCH LESS LOVE ME IN RETURN. >

< BUT SHE'S THE ONE I MOST TREASURE. >

< MORE FOOL YOU. >



MY BEIN' IN TÔKYÔ HAS NOTHIN' T' DO WITH HER--OR YOU-- THIS IS BUSINESS. KITTY PRYDE'S OVER HERE, IN TROUBLE.

KID STOWED AWAY ON A J.A.L. FLIGHT OUTTA CHICAGO-- DUNNO WHY YET-- THEN TANGLED WITH A LOCAL CRIMELORD NAMED SHIGEMATSU. LAST NIGHT, SHE TRIED TO HEIST A BANK CASH MACHINE--!

BRAVO! THERE'S HOPE FOR THE CHILD YET!

WITH HER POWERS, SHE'D MAKE A SPLENDID THIEF!

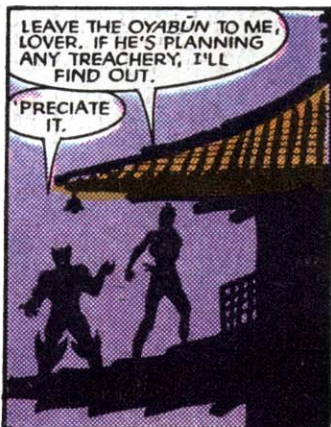


SHE'S BEIN' HELD AS HOSTAGE IN SOME YAKUZA CAPER. I ARRANGED FOR HER T'BE RELEASED TONIGHT, AT THIS TEMPLE.

YOU TRUST SHIGEMATSU?

NOPE.

BUT IT'S WORTH THE TRY.



LEAVE THE OYABÛN TO ME, LOVER. IF HE'S PLANNING ANY TREACHERY, I'LL FIND OUT.

'PRECATE IT.

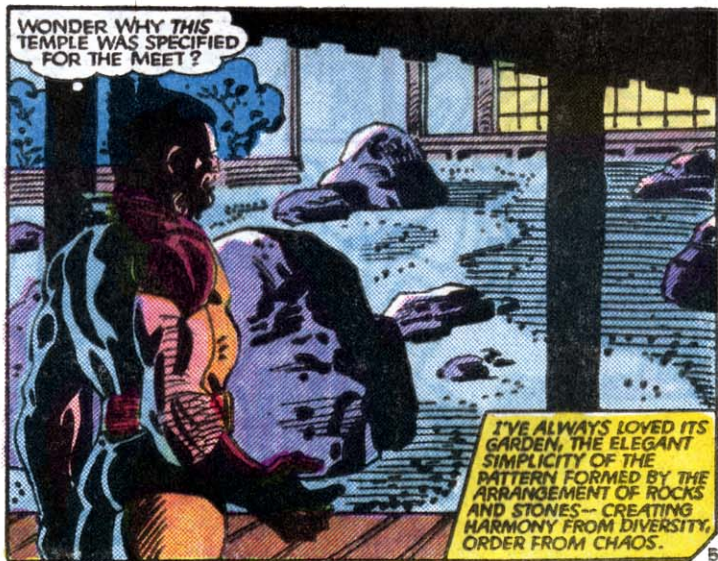


TAKE CARE!



ALWAYS DO, DARLIN'.

YOU'RE THE CRAZY ONE.



A MAN'S SPIRIT, IT'S SAID, CAN BE SHAPED THE SAME WAY.

I'VE TRIED--
FROM MY
FIRST TRIP
TO THESE
ISLANDS,
LONGER
AGO 'N I
CARE T' I
REMEMBER--

-- AN'
ALWAYS
FAILED.

?!?!

AAGKGH!!

FOOMP!

STINK-
BOMB!

A BRILLIANT PLOY-- I CAN'T GET
THE STENCH OUT OF MY NOSTRILS.
MY ENHANCED SENSE OF SMELL
IS UTTERLY NEUTRALIZED!

THE OPPOSITION TRYIN' T'
BE CUTE-- DOIN' THIS T'
PREVENT ME FROM MARKIN'
WHO AN' WHERE THEY ARE--
OR ARE THEY PULLIN' A...

... DOUBLE-
CROSS ?!!

I GOT
SOME
NERVE
CALLIN'
THE KID AN
AMATEUR.

THOK!

A NOVICE AGENT...

...FRESH
OUT OF
TRADE
SCHOOL...

...WOULDN'T'VE
BEEN SO
CARELESS--

--BLAST!

MY HEALING FACTOR'LL HANDLE BOTH
THE ARROW AN' MY DULLED SENSES--
BUT IT'LL TAKE TIME...

... A COMMODITY I
FIGURE'S IN REAL
SHORT SUPPLY.



I'M A
SITTING
DUCK
IN THIS
COURT-
YARD.

CAN'T SEE ANYTHING-- OR HEAR--
WHAT'RE THE ODDS, HOW MANY
AM I UP AGAINST ?!

WHOEVER
THEY ARE,
THEY'RE
KEEPING
THEIR
DISTANCE.
SMART
MOVE...



... AN' BAD NEWS.

MEANS
THEY
KNOW
HOW T'
FIGHT
ME.



SHOOT, IF ALL
THE SCRAPS
WERE EASY,
THEY WOULDN'T
BE FUN. I LIKE
A CHALLENGE AS
MUCH AS YUKIO--
THE MORE IMPOSS-
IBLE, THE BETTER.
I JUST DON'T GO
LOOKIN' FOR 'EM
AS MUCH ANYMORE.



SEEMS I'VE
GOT A
BREATH-
ER. BEST USE IT
T' GET RID
OF THIS
ARROW...

... AN' LET MY BODY DO ITS WORK.





I'VE BEEN STUPID ENOUGH FOR ONE NIGHT.

IF I WERE ASSIGNED
THE JOB OF KILLING ME,
HOW WOULD I DO IT?
WHAT WOULD BE MY
NEXT MOVE?!

I FIGURE THINGS OUT
A SPLIT-SECOND
BEFORE THE NINJA
HITS-- PLENTY OF TIME.



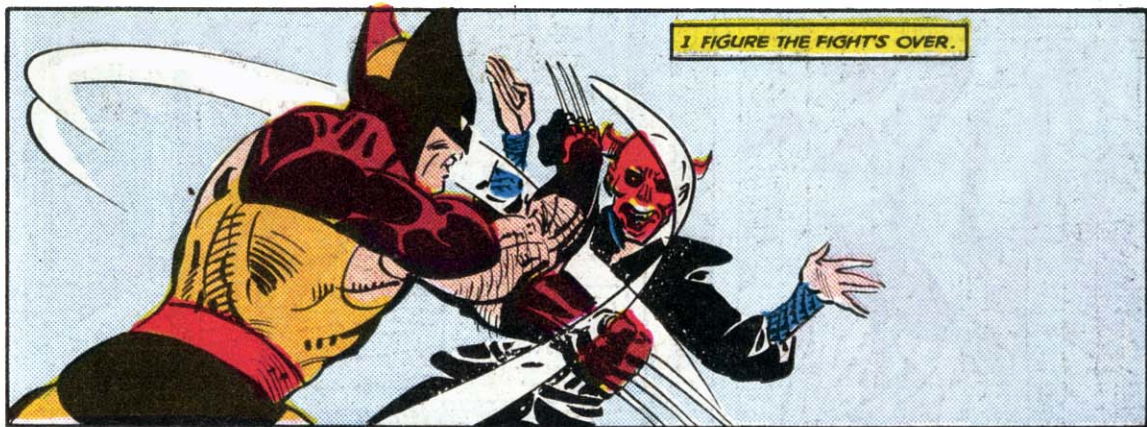
HE'S VERY
GOOD, LOSING
ONE SET OF
TIGER CLAWS
BUT MANAGING
TO DRAW BLOOD.

GETTING THE OTHER
CLAW COSTS ME
A HAMMER KICK
T' THE GUT...



... FOLLOWED UP BY A THROAT
STRIKE THAT WOULD'VE
STUNNED A NORMAL MAN.

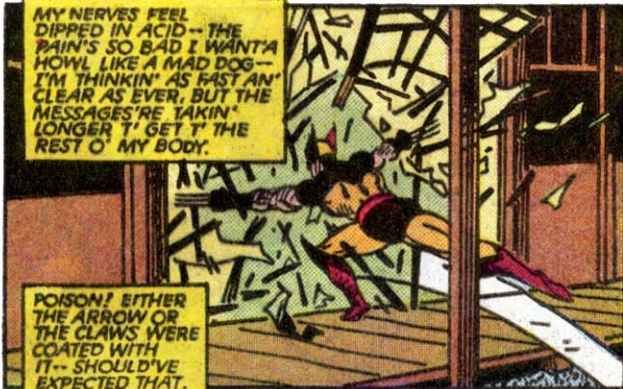
THAT BRINGS
THE NINJA IN
CLOSE, RIGHT
WHERE I
WANT HIM.





I TRY TO BREAK MY FALL-- ONLY I CAN'T!

I CAN
BARELY
MOVE.



MY NERVES FEEL
DIPPED IN ACID-- THE
RAIN'S SO BAD I WANT'A
HOWL LIKE A MAD DOG--
I'M THINKIN' AS FAST AN'
CLEAR AS EVER, BUT THE
MESSAGES'RE TAKIN'
LONGER T' GET T' THE
REST O' MY BODY.

POISON! EITHER
THE ARROW OR
THE CLAWS WERE
COATED WITH
IT-- SHOULD'VE
EXPECTED THAT.



MY SECOND
MISTAKE
T'NIGHT--
AN' THE
LAST!

'CAUSE IF I MAKE ANOTHER, I'M DEAD.
UNLESS I'M DEAD ALREADY.



WON'T BE
LONG B'FORE
I'M PARALYZED.
NO ILLUSIONS
'BOUT WHAT'LL
HAPPEN IF THE
NINJA FINDS
ME THEN.

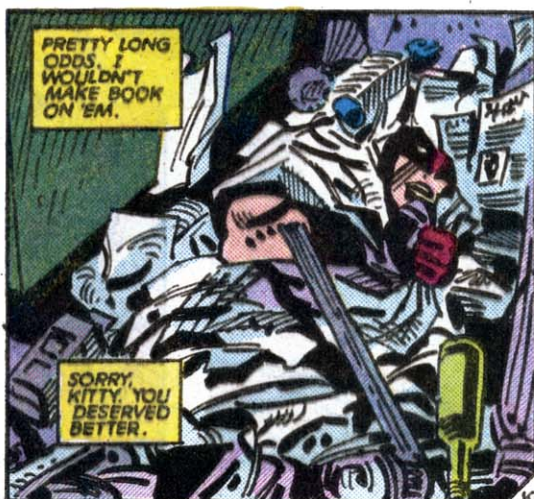


I HAVETA GO T'
GROUND-- HIDE
SOMEWHERE--
GIVE MY BODY A
CHANCE T' HEAL.



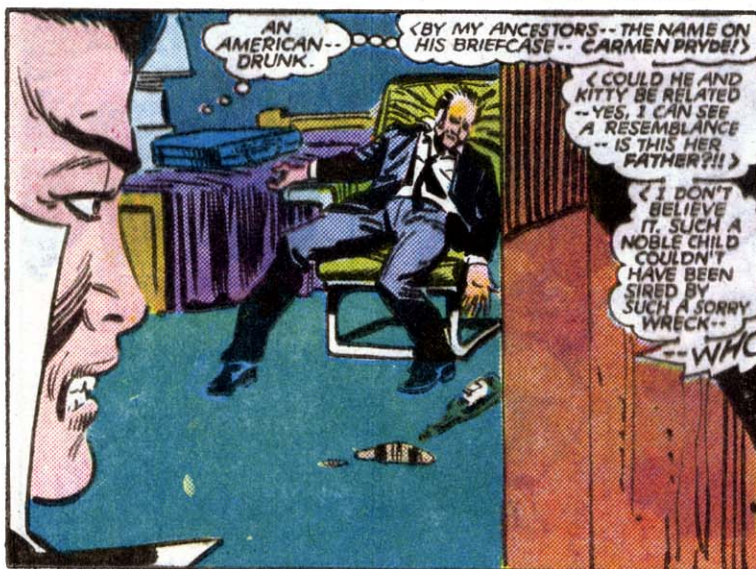
THIS LOOKS AS GOOD A PLACE AS ANY.

MY GAMBLE
IS THAT I'LL
RECOVER
B'FORE MY
ASSASSIN
TRACKS ME
DOWN.

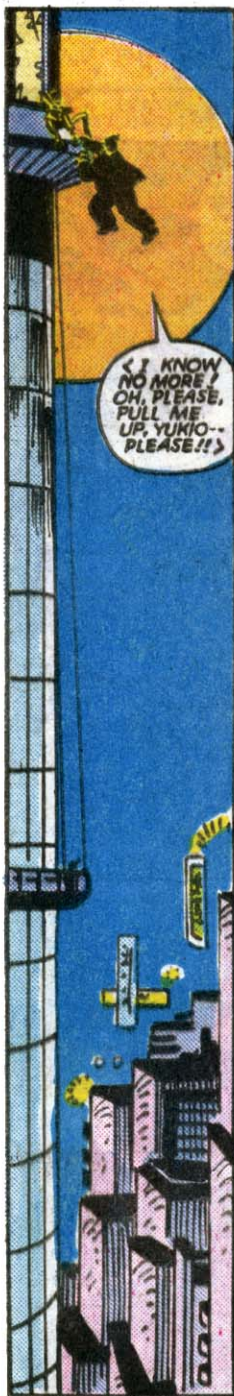


PRETTY LONG
ODDS. I
WOULDN'T
MAKE BOOK
ON 'EM.

SORRY,
KITTY. YOU
DESERVED
BETTER.









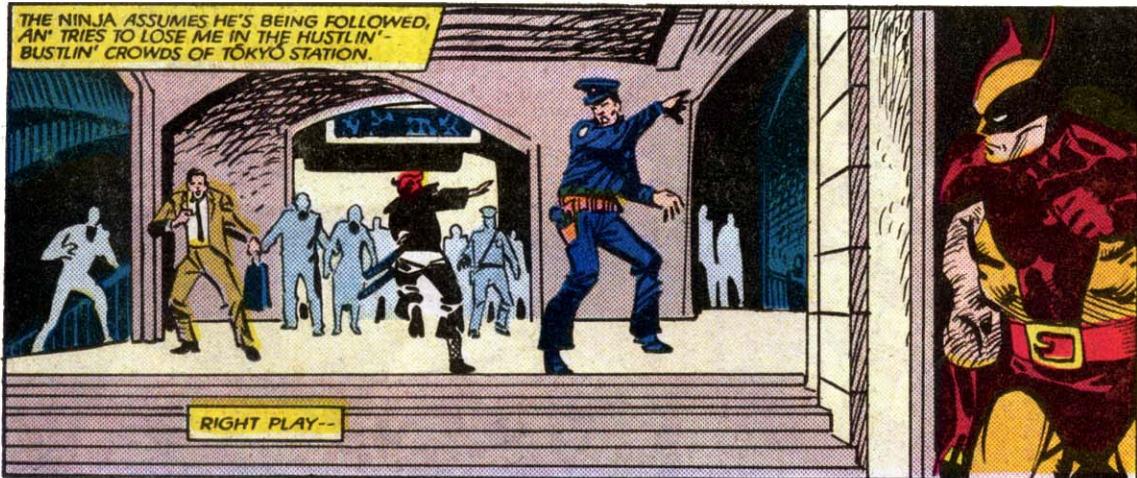


BRRING!





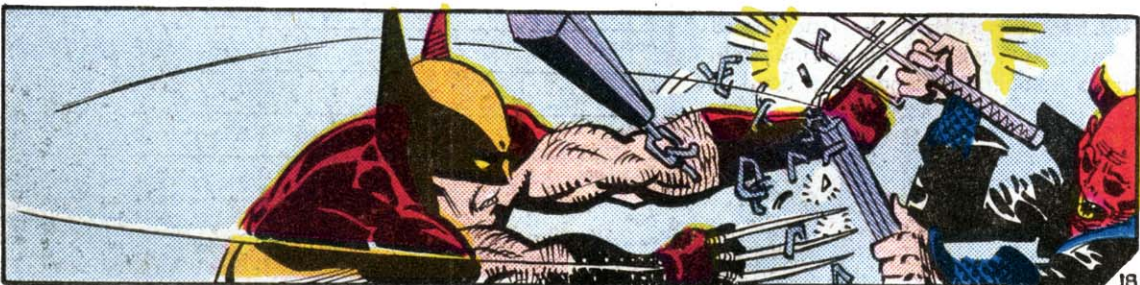
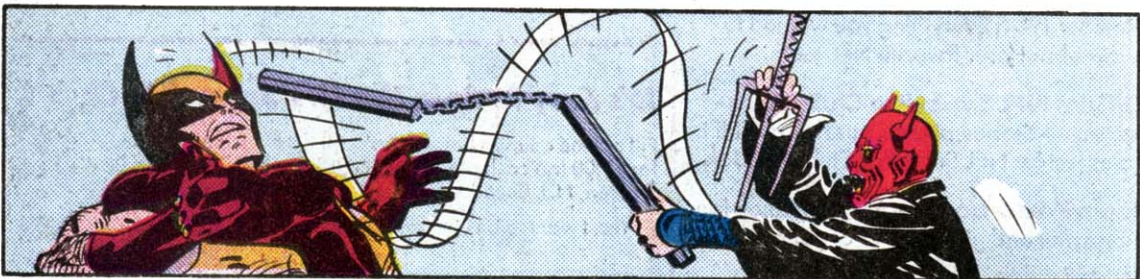
THE NINJA ASSUMES HE'S BEING FOLLOWED, AN' TRIES TO LOSE ME IN THE HUSTLIN'-BUSTLIN' CROWDS OF TOKYO STATION.

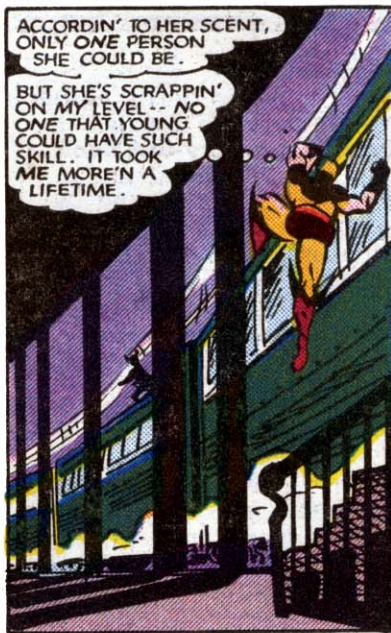
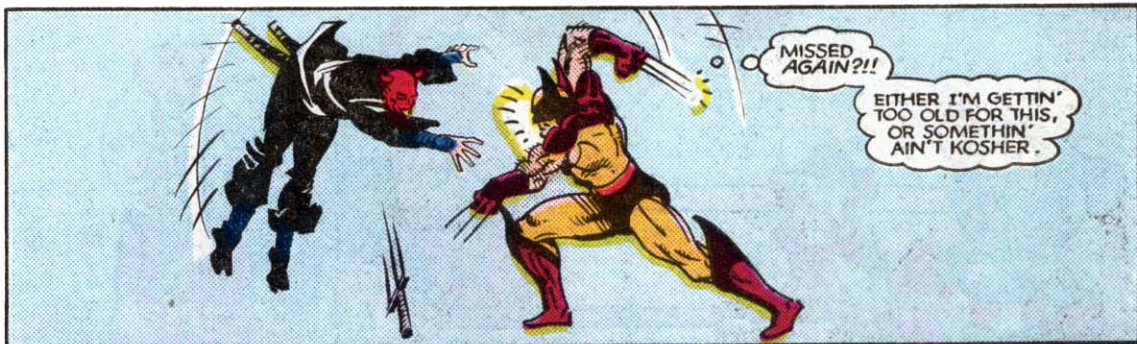
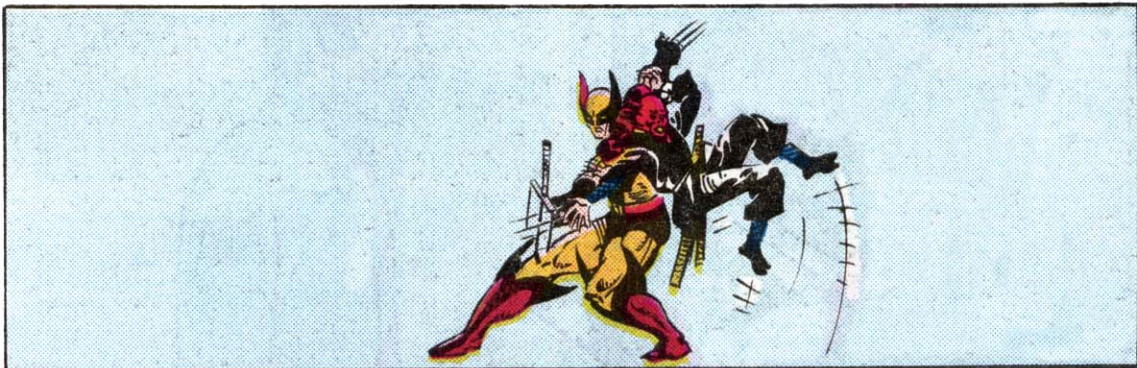
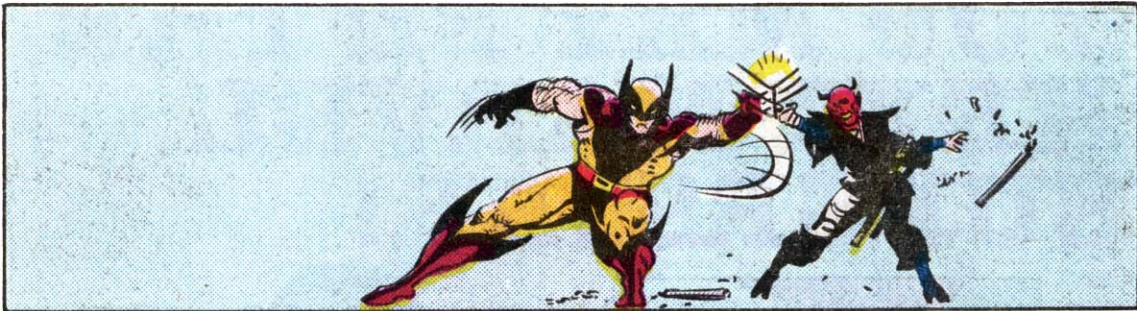


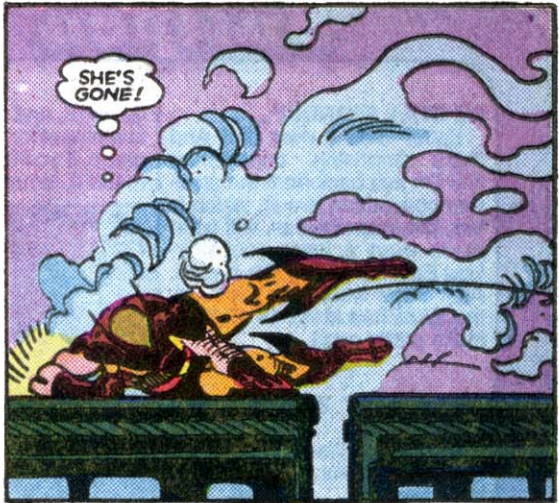
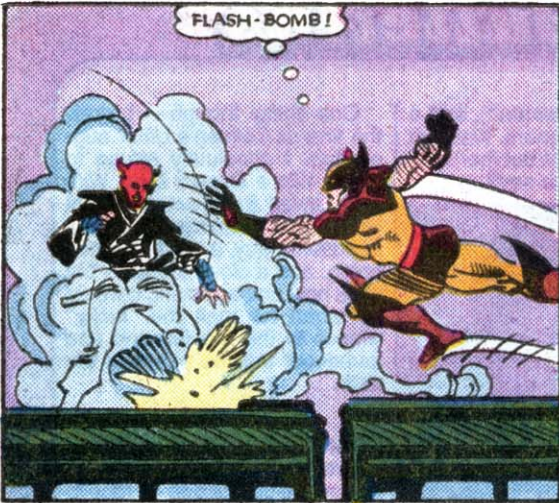
--EXCEPT THAT I'VE GOT HIS SCENT NOW.



NO WAY AM I GOING TO LOSE HIM.







DESPITE THE HOUR, THE STATION'S JUMPIN'-- WITH BOTH LONG-HAUL AN' COMMUTER TRAINS, MOSTLY PASSENGER TRAFFIC, PLUS THE OCCASIONAL FREIGHT.

WE GO FROM ONE END O' THE YARD TO THE OTHER--

--EVERY WHICH WAY WE CAN--

...OVER...

.. UNDER ...

... AROUND AN' THROUGH.

NINJA'D RATHER RUN THAN FIGHT, BUT WHEN EVER SHE LOOKS OVER HER SHOULDER, THERE I AM...

... TOO CLOSE BEHIND FOR HER TO SLACK HER PACE.

EVERY BODY HAS LIMITS.

ALL MY SENSES TELL ME I'M PUSHIN' THE KID CLOSE TO HERS.

THAT'S THE IDEA-- TO CHASE HER TILL SHE DROPS. I WANT HER ALIVE-- NOW MORE'N EVER.

< THERE HE IS! >

< HIS QUARRY'S HEADING FOR THE FENCE -- I CAN CUT THEM OFF! >

MORE COSTUMED CRAZIES! MAYBE THEY'LL ALL KILL EACH OTHER AND I'LL FINALLY BE FREE OF THIS NIGHTMARE!

BUT-- WHAT ABOUT KITTY?! I CAN'T ABANDON HER...

GOOD LORD-- DON'T THEY SEE?!

THAT TRAIN!!

SHINKANSEN.

THE "BULLET TRAIN"
--WITH A TOP SPEED
OF OVER 200K,
A HUNDRED-SIXTY
MILES PER HOUR.

WE'VE REACHED A MAIN
EXPRESS LINE, WHERE THE
ENGINEERS ACCELERATE
OUT OF TOKYO.

SUCKER AIN'T ROLLIN'
AT ANYWHERE NEAR
FULL THROTTLE.

BUT THAT'S A
MOOT POINT...

...IF YOU
HAPPEN
T' BE IN
THE WAY.

TRAIN'S PRESSURE
WAKE SCOOPS US UP...

...AN' BASHES
US ALONG.

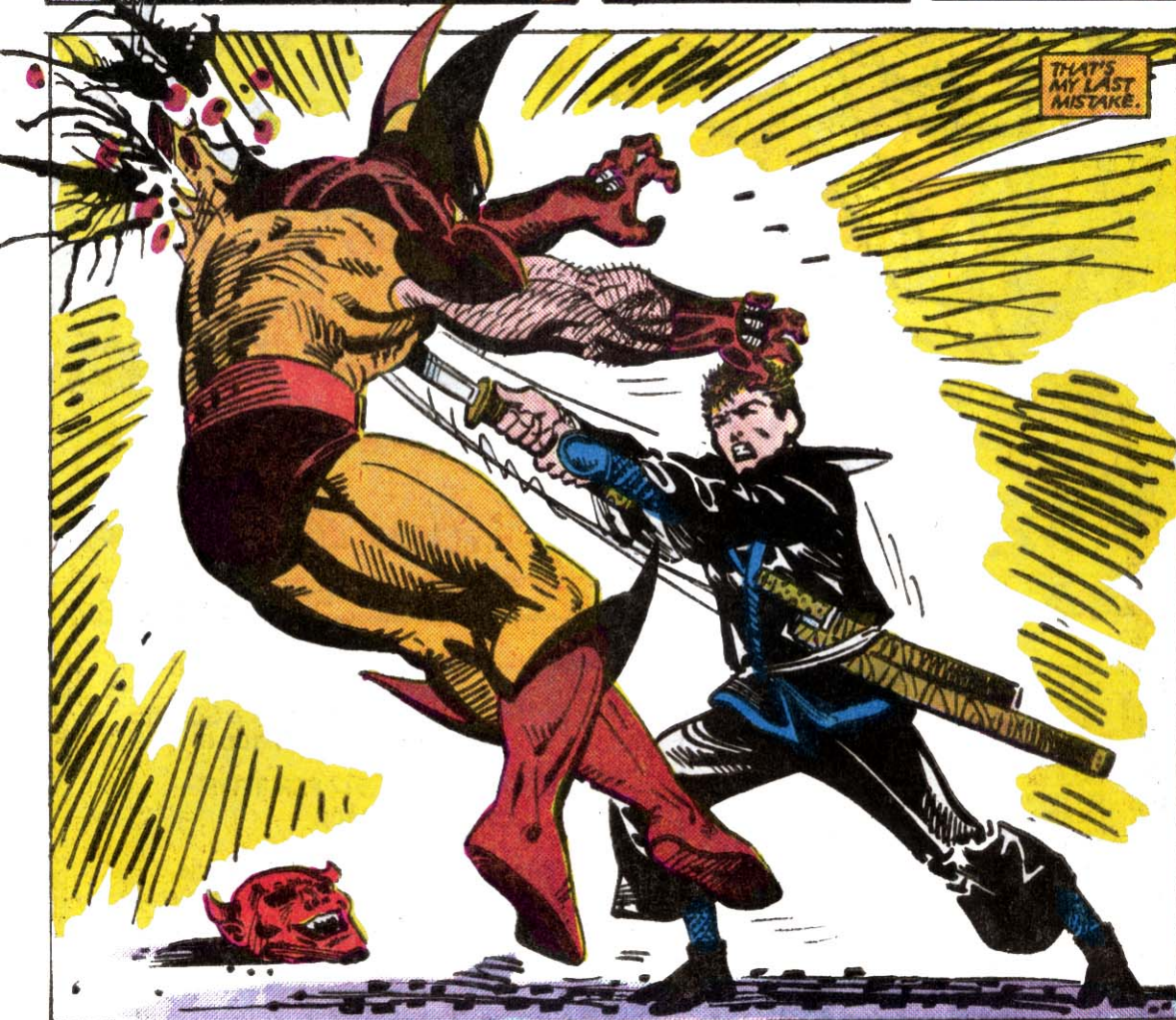
I MAKE SURE TO LAND ON MY FEET.

I S'POSE I'VE KNOWN
THE TRUTH FROM THE
MOMENT I SPOTTED
HER SCENT-- I JUST DIDN'T
WANT T' BELIEVE IT--
BUT I'VE GOT NO CHOICE...

...NOW THAT I FINALLY SEE THE NINJA'S FACE.



KITTY???



THAT'S
MY LAST
MISTAKE.

REBIRTH!